

CycloBlower H.E. Performance Data

LOW PRESSURE - PERFORMANCE DATA

MODEL	SPEED RPM	5 PSIG		9 PSIG		12 PSIG		15 PSIG		18 PSIG		20 PSIG	
		CFM	BHP	CFM	BHP	CFM	BHP	CFM	BHP	CFM	BHP	CFM	BHP
125CDL375 RC1	1000	242.4	7.5	202.4	12.5	173.1	16.5	144.4	20.9	-	-	-	-
	1700	468.4	13.3	431.6	21.4	404.7	27.8	378.5	34.4	-	-	-	-
	2400	708.5	19.9	674.9	31.1	650.5	39.8	626.6	48.8	603.4	58.1	-	-
	3100	962.7	27.3	932.3	41.6	910.3	52.6	888.9	63.9	868.1	75.5	-	-
	3800	1230.9	35.5	1203.8	52.9	1184.2	66.2	1165.2	79.9	1146.9	93.8	-	-
	4500	1513.2	44.5	1489.3	65.0	1472.1	80.7	1455.6	96.6	1439.7	112.9	-	-
125CDL375 RC2	1000	222.6	8.2	198.9	12.4	181.4	15.8	163.9	19.5	146.7	23.3	135.2	26.0
	1700	482.0	16.3	459.1	22.9	442.1	28.0	425.2	33.4	408.5	39.0	397.4	42.9
	2400	741.5	25.3	719.3	34.2	702.9	41.2	686.5	48.3	670.3	55.6	659.6	60.6
	3100	1001.0	35.3	979.6	46.5	963.7	55.2	947.9	64.1	932.2	73.2	921.9	79.3
	3800	1260.6	46.1	1239.9	59.7	1224.5	70.1	1209.3	80.8	1194.2	91.6	1184.2	99.0
	4500	1520.2	57.9	1500.2	73.8	1485.4	86.0	1470.7	98.4	1456.1	111.0	1446.5	119.5
125CDL375 RC3	1000	-	-	-	-	154.8	15.8	141.0	19.1	127.2	22.7	118.1	25.2
	1700	-	-	-	-	416.8	33.7	403.7	37.7	390.6	42.0	381.9	45.0
	2400	-	-	-	-	677.4	53.8	665.0	58.5	652.6	63.5	644.4	67.0
	3100	-	-	-	-	936.6	76.1	924.9	81.6	913.2	87.3	905.5	91.2
	3800	-	-	-	-	1194.5	100.6	1183.5	106.8	1172.5	113.3	1165.2	117.7
	4500	-	-	-	-	1451.0	127.4	1440.6	134.3	1430.3	141.5	1423.5	146.4

LOW VACUUM - PERFORMANCE DATA

MODEL	SPEED RPM	5 IN HG		8 IN HG		11 IN HG		14 IN HG		17 IN HG	
		CFM	BHP	CFM	BHP	CFM	BHP	CFM	BHP	CFM	BHP
125CDL375 RC1	1000	244.7	3.7	221.7	5.9	195.1	8.2	165.4	10.1	-	-
	1700	485.7	7.5	462.6	10.3	435.8	13.3	405.7	16.1	-	-
	2400	735.7	11.9	712.4	15.2	685.4	18.9	655.0	22.7	-	-
	3100	994.6	16.8	971.2	20.7	943.9	25.1	913.3	29.8	-	-
	3800	1262.5	22.3	1238.9	26.7	1211.5	31.8	1180.5	37.5	-	-
	4500	1539.3	28.3	1515.6	33.3	1487.9	39.0	1456.7	45.7	-	-
125CDL375 RC2	1000	245.3	4.9	235.6	6.4	223.3	8.1	207.3	10.1	185.6	12.4
	1700	485.0	10.8	475.5	12.3	463.4	14.1	447.7	16.3	426.5	18.7
	2400	732.9	17.5	723.6	19.1	711.8	21.0	696.4	23.3	675.7	26.0
	3100	989.1	25.2	980.0	26.9	968.4	28.9	953.3	31.3	933.1	34.1
	3800	1253.6	33.8	1244.6	35.5	1233.3	37.6	1218.5	40.1	1198.8	43.1
	4500	1526.3	43.3	1517.5	45.1	1506.4	47.3	1492.0	49.9	1472.7	53.1
125CDL375 RC3	1000	205.8	9.7	200.2	9.2	192.6	8.8	181.6	8.4	164.5	8.6
	1700	452.7	21.4	447.4	20.6	440.1	19.6	429.6	18.5	413.2	17.7
	2400	701.7	34.3	696.6	33.1	689.7	31.6	679.7	29.8	663.9	28.0
	3100	952.7	48.4	947.9	46.8	941.3	44.8	931.7	42.3	916.7	39.5
	3800	1205.6	63.7	1201.1	61.7	1194.8	59.1	1185.7	56.0	1171.4	52.1
	4500	1460.6	80.2	1456.3	77.7	1450.4	74.7	1441.8	70.9	1428.1	65.9

DIMENSIONS IN INCHES UNLESS OTHERWISE NOTED

MODEL	A	B	C	D	E	F	G	H	J	K	L	M
125CDL375	8.25	4.33	33.02	7.00	7.00	6.59	18.11	15.25	2.165 (55mm)	16 × 10 × 100 (mm)	19.45	6.50
	N	P	Q	R	S	T	U	V	W	X	Y	
	8" ANSI 125FF	28.93	5.54	21.23	13.00	6.50	4.04	9.82	5" ANSI 125FF	0.69	.69 × .94	

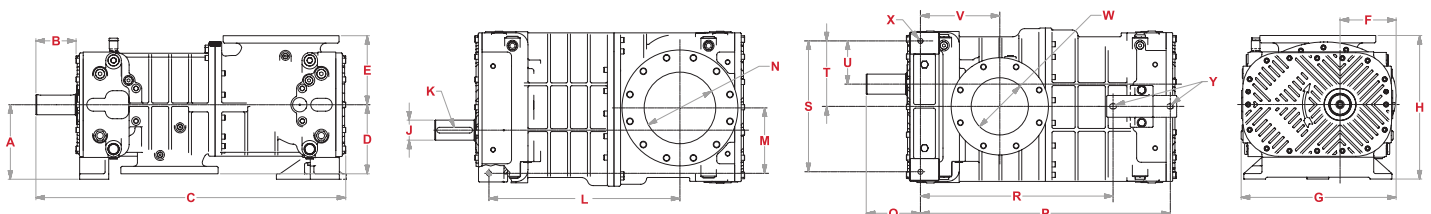
NOTE: C, F, G are for 3PT mount

HIGH PRESSURE - PERFORMANCE DATA

MODEL	SPEED RPM	21 PSIG		24 PSIG		27 PSIG		30 PSIG		33 PSIG		36 PSIG	
		CFM	BHP	CFM	BHP	CFM	BHP	CFM	BHP	CFM	BHP	CFM	BHP
125CDL375 RC1	1000	-	-	-	-	-	-	-	-	-	-	-	-
	1700	-	-	-	-	-	-	-	-	-	-	-	-
	2400	-	-	-	-	-	-	-	-	-	-	-	-
	3100	-	-	-	-	-	-	-	-	-	-	-	-
	3800	-	-	-	-	-	-	-	-	-	-	-	-
	4500	-	-	-	-	-	-	-	-	-	-	-	-
125CDL375 RC2	1000	129.5	27.4	-	-	-	-	-	-	-	-	-	-
	1700	391.9	44.8	375.4	50.8	-	-	-	-	-	-	-	-
	2400	654.3	63.2	638.4	70.9	622.6	78.9	607.0	87.1	-	-	-	-
	3100	916.7	82.5	901.4	92.0	886.1	101.7	871.0	111.6	-	-	-	-
	3800	1179.2	102.7	1164.4	113.9	1149.7	125.4	1135.2	137.1	-	-	-	-
	4500	1441.7	123.8	1427.4	136.8	1413.3	150.0	1399.3	163.4	-	-	-	-
125CDL375 RC3	1000	113.5	26.5	-	-	-	-	-	-	-	-	-	-
	1700	377.6	46.5	364.6	51.3	351.6	56.4	-	-	-	-	-	-
	2400	640.3	68.8	628.0	74.3	615.7	80.1	603.4	86.1	-	-	-	-
	3100	901.6	93.3	890.0	99.5	878.3	106.0	866.8	112.8	855.2	119.9	843.7	127.2
	3800	1161.5	120.0	1150.6	127.0	1139.7	134.2	1128.8	141.7	1117.9	149.5	1107.1	157.5
	4500	1420.1	149.0	1409.8	156.7	1399.6	164.6	1389.4	172.9	1379.2	181.4	1369.1	190.1

HIGH VACUUM - PERFORMANCE DATA

MODEL	SPEED RPM	18 IN HG		19 IN HG		20 IN HG		21 IN HG		22 IN HG	
		CFM	BHP	CFM	BHP	CFM	BHP	CFM	BHP	CFM	BHP
125CDL375 RC1	1000	-	-	-	-	-	-	-	-	-	-
	1700	-	-	-	-	-	-	-	-	-	-
	2400	-	-	-	-	-	-	-	-	-	-
	3100	-	-	-	-	-	-	-	-	-	-
	3800	-	-	-	-	-	-	-	-	-	-
	4500	-	-	-	-	-	-	-	-	-	-
125CDL375 RC2	1000	176.6	13.2	166.6	13.9	155.4	14.4	-	-	-	-
	1700	417.8	19.6	408.0	20.4	397.0	21.0	-	-	-	-
	2400	667.1	26.9	657.6	27.8	647.0	28.5	-	-	-	-
	3100	924.8	35.1	915.5	36.1	905.2	36.9	-	-	-	-
	3800	1190.7	44.2	1181.7	45.3	1171.6	46.2	-	-	-	-
	4500	1464.8	54.2	1456.1	55.4	1446.3	56.5	-	-	-	-
125CDL375 RC3	1000	156.5	9.0	146.7	9.6	134.5	10.7	118.9	12.4	-	-
	1700	405.5	17.6	396.1	17.7	384.3	18.1	369.3	19.1	-	-
	2400	656.6	27.4	647.5	27.0	636.2	26.8	621.7	26.9	602.4	27.8
	3100	909.6	38.5	900.9	37.5	890.0	36.6	876.0	35.9	857.5	35.8
	3800	1164.6	50.6	1156.3	49.1	1145.9	47.6	1132.4	46.2	1114.5	45.1
	4500	1421.7	64.0	1413.7	62.0	1403.7	59.8	1390.8	57.5	1373.6	55.5



CycloBlower H.E. Performance Data

LOW PRESSURE - PERFORMANCE DATA

MODEL	SPEED RPM	5 PSIG		9 PSIG		12 PSIG		15 PSIG		18 PSIG		20 PSIG	
		CFM	BHP	CFM	BHP	CFM	BHP	CFM	BHP	CFM	BHP	CFM	BHP
160CDL480 RC1	1000	542.8	15.9	463.5	27.3	407.2	36.0	353.7	44.8	-	-	-	-
	1500	940.0	24.4	863.9	40.7	810.1	53.0	759.0	65.6	-	-	-	-
	2000	1340.2	34.0	1267.4	55.2	1216.0	71.2	1167.3	87.4	-	-	-	-
	2500	1743.5	44.8	1673.9	70.9	1624.9	90.6	1578.6	110.4	-	-	-	-
	3000	2149.7	56.8	2083.3	87.7	2036.7	111.1	1992.9	134.5	-	-	-	-
	3600	2641.1	72.6	2578.6	109.4	2535.0	137.1	2494.0	165.0	-	-	-	-
160CDL480 RC2	1000	509.0	18.2	471.8	26.2	443.0	32.9	413.3	40.0	382.8	47.8	-	-
	1500	893.2	29.4	856.4	41.3	827.9	50.9	798.5	61.0	768.3	71.6	747.8	78.9
	2000	1284.3	41.7	1247.9	57.4	1219.7	69.9	1190.6	82.9	1160.8	96.4	1140.4	105.7
	2500	1682.4	54.9	1646.4	74.6	1618.4	89.9	1589.7	105.8	1560.1	122.2	1540.0	133.5
	3000	2087.3	69.2	2051.7	92.7	2024.1	111.0	1995.6	129.8	1966.4	149.1	1946.4	162.3
	3600	2582.4	87.7	2547.3	115.9	2520.0	137.6	2491.9	159.9	2463.0	182.7	2443.3	198.2
160CDL480 RC3	1000	-	-	-	-	395.1	41.9	388.0	46.1	-	-	-	-
	1500	-	-	-	-	770.1	63.9	763.4	70.1	754.3	76.8	747.0	81.6
	2000	-	-	-	-	1156.6	87.4	1150.2	95.6	1141.6	104.3	1134.5	110.4
	2500	-	-	-	-	1554.6	112.5	1548.6	122.6	1540.2	133.3	1533.4	140.8
	3000	-	-	-	-	1964.0	139.2	1958.3	151.3	1950.3	164.0	1943.8	172.7
	3600	-	-	-	-	2470.3	173.3	2465.1	187.8	2457.6	202.8	2451.3	213.2

LOW VACUUM - PERFORMANCE DATA

MODEL	SPEED RPM	5 IN HG		8 IN HG		11 IN HG		14 IN HG		17 IN HG	
		CFM	BHP	CFM	BHP	CFM	BHP	CFM	BHP	CFM	BHP
160CDL480 RC1	1000	570.1	7.0	526.3	11.8	470.9	17.0	398.7	22.0	-	-
	1500	957.3	13.1	916.1	18.7	864.0	24.9	796.5	31.4	-	-
	2000	1351.1	19.9	1312.5	26.3	1263.8	33.5	1201.0	41.3	-	-
	2500	1751.6	27.3	1715.6	34.4	1670.3	42.6	1612.2	51.8	-	-
	3000	2158.9	35.2	2125.4	43.1	2083.5	52.3	2030.1	62.9	-	-
	3600	2656.4	45.5	2626.0	54.3	2588.2	64.8	2540.3	77.0	-	-
160CDL480 RC2	1000	551.4	10.3	529.4	12.8	502.3	15.8	468.7	19.4	427.1	23.5
	1500	934.9	19.4	912.6	22.1	885.2	25.3	851.1	29.3	808.7	33.8
	2000	1321.9	29.0	1299.3	31.9	1271.5	35.4	1236.9	39.7	1193.8	44.8
	2500	1712.3	39.3	1689.4	42.4	1661.3	46.1	1626.2	50.8	1582.3	56.4
	3000	2106.1	50.2	2083.0	53.5	2054.5	57.5	2018.9	62.4	1974.2	68.5
	3600	2583.3	64.0	2559.8	67.5	2530.9	71.8	2494.6	77.2	2449.1	83.9
160CDL480 RC3	1000	-	-	-	-	431.7	19.8	412.8	20.8	385.1	22.5
	1500	-	-	-	-	815.7	32.9	798.7	33.6	773.7	34.8
	2000	-	-	-	-	1201.6	46.7	1186.4	47.0	1164.2	47.7
	2500	-	-	-	-	1589.3	61.0	1576.0	61.1	1556.6	61.3
	3000	-	-	-	-	1979.0	76.0	1967.6	75.7	1950.9	75.4
	3600	-	-	-	-	2449.0	94.8	2439.9	94.1	2426.5	93.3

DIMENSIONS IN INCHES UNLESS OTHERWISE NOTED

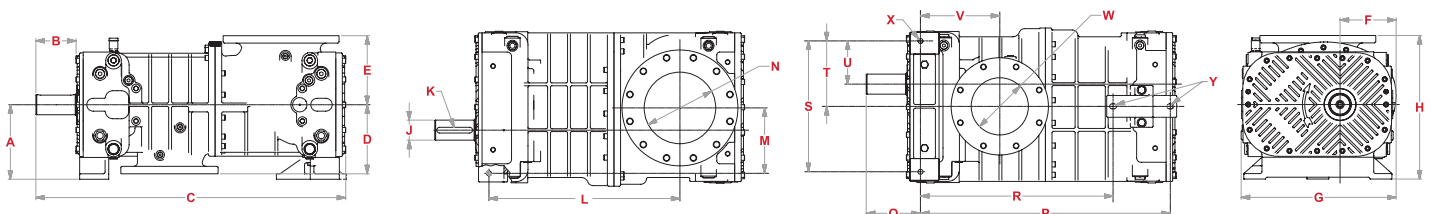
MODEL	A	B	C	D	E	F	G	H	J	K	L	M
160CDL480	10.25	5.51	42.63	9.5	9.5	7.7	21.3	19.75	2.76	12 × 20 × 125 (mm)	26.28	9
	N	P	Q	R	S	T	U	V	W	X	Y	
	10" ANSI125FF	34.38	7.46	26.5	18	9	5.94	10.9	8" ANSI125FF	0.69	.69 × .94	

HIGH PRESSURE - PERFORMANCE DATA

MODEL	SPEED RPM	21 PSIG		24 PSIG		27 PSIG		30 PSIG		33 PSIG		36 PSIG	
		CFM	BHP	CFM	BHP	CFM	BHP	CFM	BHP	CFM	BHP	CFM	BHP
160CDL480 RC1	1000	-	-	-	-	-	-	-	-	-	-	-	-
	1500	-	-	-	-	-	-	-	-	-	-	-	-
	2000	-	-	-	-	-	-	-	-	-	-	-	-
	2500	-	-	-	-	-	-	-	-	-	-	-	-
	3000	-	-	-	-	-	-	-	-	-	-	-	-
	3600	-	-	-	-	-	-	-	-	-	-	-	-
160CDL480 RC2	1000	351.6	56.0	319.5	64.8	-	-	-	-	-	-	-	-
	1500	737.4	82.7	705.6	94.4	673.0	106.6	-	-	-	-	-	-
	2000	1130.1	110.4	1098.6	125.0	1066.4	140.1	1033.3	155.8	-	-	-	-
	2500	1529.8	139.2	1498.6	156.7	1466.6	174.7	1433.8	193.2	-	-	-	-
	3000	1936.3	168.9	1905.5	189.3	1873.8	210.2	1841.3	231.7	-	-	-	-
	3600	2433.4	206.0	2402.8	229.9	2371.5	254.3	2339.4	279.2	-	-	-	-
160CDL480 RC3	1000	366.8	56.2	352.8	62.1	336.5	68.6	-	-	-	-	-	-
	1500	743.0	84.1	729.3	92.0	713.4	100.4	695.2	109.5	674.6	119.1	-	-
	2000	1130.6	113.6	1117.3	123.4	1101.7	133.9	1083.8	144.9	1063.6	156.4	1041.2	168.6
	2500	1529.6	144.6	1516.7	156.4	1501.5	168.9	1483.9	181.8	1464.1	195.4	1442.0	209.5
	3000	1940.1	177.2	1927.5	191.0	1912.7	205.4	1895.5	220.4	1876.0	235.9	1854.3	252.0
	3600	2447.8	218.4	2435.6	234.6	2421.2	251.4	2404.5	268.8	2385.4	286.7	2364.1	305.1

HIGH VACUUM - PERFORMANCE DATA

MODEL	SPEED RPM	18 IN HG		19 IN HG		20 IN HG		21 IN HG		22 IN HG	
		CFM	BHP	CFM	BHP	CFM	BHP	CFM	BHP	CFM	BHP
160CDL480 RC1	1000	-	-	-	-	-	-	-	-	-	-
	1500	-	-	-	-	-	-	-	-	-	-
	2000	-	-	-	-	-	-	-	-	-	-
	2500	-	-	-	-	-	-	-	-	-	-
	3000	-	-	-	-	-	-	-	-	-	-
	3600	-	-	-	-	-	-	-	-	-	-
160CDL480 RC2	1000	411.4	24.9	395.2	26.1	378.9	27.2	-	-	-	-
	1500	792.7	35.4	776.1	37.0	759.4	38.3	-	-	-	-
	2000	1177.4	46.6	1160.4	48.4	1143.2	50.1	-	-	-	-
	2500	1565.6	58.4	1548.2	60.5	1530.5	62.5	-	-	-	-
	3000	1957.2	70.8	1939.4	73.1	1921.3	75.4	-	-	-	-
	3600	2431.7	86.5	2413.4	89.1	2394.7	91.8	-	-	-	-
160CDL480 RC3	1000	372.8	23.3	358.3	24.3	340.9	25.6	319.5	27.2	-	-
	1500	762.7	35.4	749.6	36.1	733.9	37.1	714.7	38.4	690.7	40.2
	2000	1154.4	48.1	1142.7	48.6	1128.8	49.3	1111.7	50.2	1090.4	51.5
	2500	1548.0	61.4	1537.8	61.7	1525.6	62.0	1510.6	62.6	1492.0	63.4
	3000	1943.5	75.4	1934.7	75.4	1924.2	75.4	1911.4	75.6	1895.4	75.9
	3600	2420.5	92.9	2413.5	92.6	2405.1	92.3	2394.9	92.0	2382.1	91.8



CycloBlower H.E. Performance Data

LOW PRESSURE – PERFORMANCE DATA

MODEL	SPEED RPM	5 PSIG		9 PSIG		12 PSIG		15 PSIG		18 PSIG		20 PSIG	
		CFM	BHP	CFM	BHP	CFM	BHP	CFM	BHP	CFM	BHP	CFM	BHP
200CDL600 RC1	800	891.7	23.4	806.7	39.7	749.6	52.7	698.1	66.2	-	-	-	-
	1200	1498.0	37.5	1416.0	61.7	1361.1	80.6	1311.9	100.0	1268.3	120.0	-	-
	1600	2102.4	52.6	2023.4	84.7	1970.8	109.4	1923.8	134.8	1882.5	160.7	-	-
	2000	2705.0	68.7	2629.0	108.6	2578.6	139.2	2533.9	170.5	2494.8	202.3	-	-
	2400	3305.8	85.7	3232.8	133.5	3184.6	170.0	3142.1	207.2	3105.3	245.0	-	-
	2800	3904.8	103.6	3834.7	159.3	3788.8	201.8	3748.5	244.9	3713.9	288.6	-	-
200CDL600 RC2	800	828.8	26.8	767.8	40.0	720.9	50.8	673.0	62.5	624.1	75.0	590.9	83.8
	1200	1459.7	44.6	1402.3	63.5	1358.0	78.6	1312.7	94.5	1266.5	111.2	1235.1	122.8
	1600	2078.8	64.1	2024.9	88.6	1983.2	107.9	1940.6	128.1	1897.0	149.0	1867.4	163.5
	2000	2686.0	85.3	2635.6	115.4	2596.6	138.9	2556.7	163.3	2515.7	188.5	2487.8	205.7
	2400	3281.4	108.0	3234.5	143.8	3198.2	171.6	3160.9	200.2	3122.6	229.6	3096.5	249.6
	2800	3864.9	132.4	3821.6	173.8	3787.9	205.8	3753.3	238.6	3717.6	272.3	3693.3	295.2
200CDL600 RC3	800	-	-	-	-	752.2	56.3	720.8	65.3	690.2	74.9	670.2	81.6
	1200	-	-	-	-	1360.3	91.7	1330.2	103.6	1300.9	116.0	1281.7	124.6
	1600	-	-	-	-	1969.1	129.5	1940.3	144.2	1912.3	159.5	1894.0	170.0
	2000	-	-	-	-	2578.6	169.7	2551.1	187.2	2524.5	205.3	2507.1	217.8
	2400	-	-	-	-	3188.9	212.2	3162.8	232.6	3137.4	253.6	3120.9	267.9
	2800	-	-	-	-	3800.0	257.1	3775.2	280.4	3751.1	304.2	3735.5	320.4

LOW VACUUM – PERFORMANCE DATA

MODEL	SPEED RPM	5 IN HG		8 IN HG		11 IN HG		14 IN HG		17 IN HG	
		CFM	BHP	CFM	BHP	CFM	BHP	CFM	BHP	CFM	BHP
200CDL600 RC1	800	924.8	11.3	884.1	18.2	833.3	25.7	768.5	32.9	-	-
	1200	1509.0	21.1	1468.9	29.2	1418.9	38.3	1355.3	47.8	-	-
	1600	2104.4	31.4	2064.9	40.8	2015.7	51.5	1953.2	63.3	-	-
	2000	2711.0	42.4	2672.1	53.0	2623.6	65.4	2562.2	79.4	-	-
	2400	3328.8	54.0	3290.4	65.9	3242.8	79.8	3182.5	96.1	-	-
	2800	3957.7	66.2	3919.9	79.3	3873.1	94.9	3813.9	113.4	-	-
200CDL600 RC2	800	886.4	15.9	853.4	19.5	812.7	23.9	761.9	29.1	698.5	35.0
	1200	1479.6	29.0	1446.4	33.0	1405.6	37.8	1354.5	43.6	1290.8	50.5
	1600	2077.2	43.3	2043.9	47.7	2002.8	53.0	1951.5	59.5	1887.4	67.3
	2000	2679.1	59.0	2645.7	63.8	2604.4	69.6	2552.9	76.7	2488.4	85.4
	2400	3285.4	76.1	3251.8	81.2	3210.4	87.4	3158.6	95.2	3093.7	104.9
	2800	3896.0	94.4	3862.3	99.9	3820.7	106.6	3768.6	115.0	3703.4	125.6
200CDL600 RC3	800	-	-	-	-	833.6	29.8	796.7	30.1	748.0	31.0
	1200	-	-	-	-	1421.9	49.9	1384.1	49.6	1334.1	49.8
	1600	-	-	-	-	2014.8	71.3	1976.1	70.5	1924.7	69.9
	2000	-	-	-	-	2612.1	94.1	2572.5	92.8	2519.8	91.3
	2400	-	-	-	-	3214.0	118.2	3173.5	116.3	3119.5	114.1
	2800	-	-	-	-	3820.4	143.7	3779.1	141.3	3723.7	138.3

DIMENSIONS IN INCHES UNLESS OTHERWISE NOTED

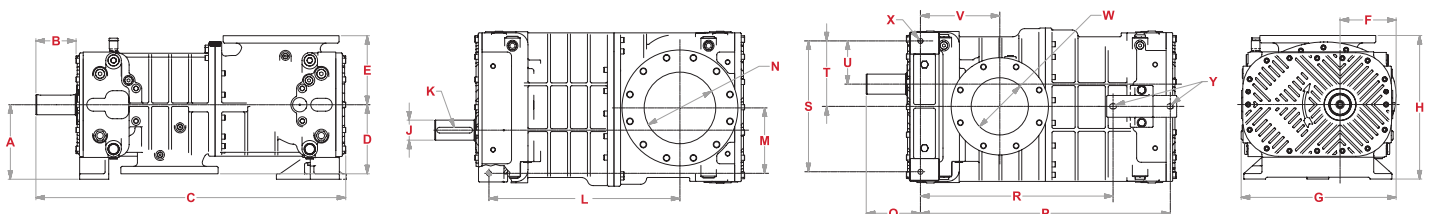
MODEL	A	B	C	D	E	F	G	H	J	K	L	M
200CDL600	12.00	7.05	51.59	11.00	11.00	9.52	26.21	23.00	3.54 (90mm)	14 × 25 × 140 (mm)	33.04	11.75
	N	P	Q	R	S	T	U	V	W	X	Y	
	12" ANSI125FF	42.16	8.39	34.29	23.50	11.75	7.75	13.23	10" ANSI125FF	0.81	.69 × .94	

HIGH PRESSURE - PERFORMANCE DATA

MODEL	SPEED RPM	21 PSIG		24 PSIG		27 PSIG		30 PSIG		33 PSIG		36 PSIG	
		CFM	BHP	CFM	BHP	CFM	BHP	CFM	BHP	CFM	BHP	CFM	BHP
200CDL600 RC1	800	-	-	-	-	-	-	-	-	-	-	-	-
	1200	-	-	-	-	-	-	-	-	-	-	-	-
	1600	-	-	-	-	-	-	-	-	-	-	-	-
	2000	-	-	-	-	-	-	-	-	-	-	-	-
	2400	-	-	-	-	-	-	-	-	-	-	-	-
	2800	-	-	-	-	-	-	-	-	-	-	-	-
200CDL600 RC2	800	574.2	88.3	523.3	102.5	-	-	-	-	-	-	-	-
	1200	1219.2	128.8	1170.9	147.1	1121.7	166.3	-	-	-	-	-	-
	1600	1852.4	170.8	1806.8	193.4	1760.1	216.9	1712.5	241.1	-	-	-	-
	2000	2473.7	214.5	2430.8	241.3	2386.8	269.0	2341.8	297.5	-	-	-	-
	2400	3083.2	259.8	3042.9	290.9	3001.6	322.8	2959.3	355.5	-	-	-	-
	2800	3680.9	306.8	3643.3	342.1	3604.6	378.2	3564.9	415.1	-	-	-	-
200CDL600 RC3	800	660.3	85.0	631.3	95.7	603.0	107.1	575.5	119.0	-	-	-	-
	1200	1272.3	129.0	1244.6	142.6	1217.6	156.7	1191.5	171.5	1166.1	186.8	1141.5	202.8
	1600	1885.1	175.3	1858.6	191.8	1833.0	208.8	1808.2	226.4	1784.1	244.6	1760.9	263.4
	2000	2498.6	224.1	2473.5	243.4	2449.2	263.2	2425.6	283.7	2402.9	304.8	2381.0	326.4
	2400	3112.8	275.2	3089.0	297.3	3066.1	320.0	3043.8	343.4	3022.4	367.3	3001.8	391.8
	2800	3727.9	328.6	3705.4	353.6	3683.7	379.2	3662.8	405.4	3642.7	432.2	3623.4	459.5

HIGH VACUUM - PERFORMANCE DATA

MODEL	SPEED RPM	18 IN HG		19 IN HG		20 IN HG		21 IN HG		22 IN HG	
		CFM	BHP	CFM	BHP	CFM	BHP	CFM	BHP	CFM	BHP
200CDL600 RC1	800	-	-	-	-	-	-	-	-	-	-
	1200	-	-	-	-	-	-	-	-	-	-
	1600	-	-	-	-	-	-	-	-	-	-
	2000	-	-	-	-	-	-	-	-	-	-
	2400	-	-	-	-	-	-	-	-	-	-
	2800	-	-	-	-	-	-	-	-	-	-
200CDL600 RC2	800	674.4	36.9	649.3	38.7	623.9	40.1	-	-	-	-
	1200	1266.5	52.8	1241.2	55.1	1215.5	57.1	-	-	-	-
	1600	1863.0	70.1	1837.5	72.8	1811.6	75.4	-	-	-	-
	2000	2463.8	88.6	2438.1	91.9	2411.9	95.1	-	-	-	-
	2400	3069.0	108.5	3043.1	112.3	3016.7	116.1	-	-	-	-
	2800	3678.5	129.7	3652.4	134.0	3625.8	138.4	-	-	-	-
200CDL600 RC3	800	728.3	31.6	706.6	32.5	682.8	33.8	657.1	35.7	630.1	38.7
	1200	1313.8	50.1	1291.4	50.5	1266.8	51.3	1240.0	52.6	1211.8	54.8
	1600	1903.8	69.8	1880.7	69.9	1855.3	70.2	1827.5	70.9	1798.0	72.3
	2000	2498.4	90.9	2474.6	90.6	2448.3	90.4	2419.5	90.4	2388.8	91.1
	2400	3097.5	113.4	3073.0	112.6	3045.9	111.9	3016.1	111.4	2984.0	111.2
	2800	3701.1	137.2	3675.9	136.0	3648.0	134.8	3617.1	133.7	3583.8	132.8



CycloBlower H.E. Performance Data

LOW PRESSURE - PERFORMANCE DATA

MODEL	SPEED RPM	5 PSIG		9 PSIG		12 PSIG		15 PSIG		18 PSIG		20 PSIG	
		CFM	BHP	CFM	BHP	CFM	BHP	CFM	BHP	CFM	BHP	CFM	BHP
250CDL750 RC1	500	893.1	28.5	756.4	50.1	670.2	67.3	598.2	85.4	-	-	-	-
	840	1889.2	50.0	1754.3	84.6	1669.5	111.4	1598.8	139.2	-	-	-	-
	1180	2903.1	74.4	2769.9	121.9	2686.5	158.5	2617.2	195.9	2561.9	234.2	-	-
	1520	3934.6	101.7	3803.3	162.1	3721.2	208.4	3653.2	255.5	3599.3	303.5	-	-
	1860	4983.9	131.9	4854.4	205.2	4773.7	261.1	4707.0	318.0	4654.4	375.7	-	-
	2200	6050.9	164.9	5923.2	251.1	5843.8	316.8	5778.5	383.3	5727.3	450.7	-	-
250CDL750 RC2	500	872.9	32.4	785.8	49.9	721.9	63.9	659.3	78.5	-	-	-	-
	840	1902.3	60.7	1819.2	88.5	1758.3	110.0	1698.6	132.3	1640.2	155.2	1602.0	170.9
	1180	2938.7	92.6	2859.5	130.5	2801.6	159.7	2744.9	189.6	2689.5	220.2	2653.2	241.0
	1520	3982.1	127.9	3906.9	176.1	3851.9	212.9	3798.2	250.5	3745.7	288.8	3711.4	314.6
	1860	5032.4	166.8	4961.1	225.2	4909.1	269.7	4858.4	314.9	4808.9	360.8	4776.6	391.8
	2200	6089.7	209.2	6022.4	277.8	5973.4	329.9	5925.6	382.8	5879.0	436.4	5848.7	472.4
250CDL750 RC3	500	-	-	-	-	692.0	64.9	644.6	77.3	-	-	-	-
	840	-	-	-	-	1679.6	120.5	1634.0	137.3	1589.4	155.3	1560.1	167.8
	1180	-	-	-	-	2693.6	183.2	2649.8	204.6	2606.9	227.1	2578.9	242.7
	1520	-	-	-	-	3734.0	253.1	3691.9	279.1	3650.9	306.2	3624.0	324.8
	1860	-	-	-	-	4800.7	330.2	4760.5	360.8	4721.2	392.4	4695.5	414.1
	2200	-	-	-	-	5893.9	414.5	5855.4	449.6	5817.9	485.8	5793.5	510.5

LOW VACUUM - PERFORMANCE DATA

MODEL	SPEED RPM	5 IN HG		8 IN HG		11 IN HG		14 IN HG		17 IN HG	
		CFM	BHP	CFM	BHP	CFM	BHP	CFM	BHP	CFM	BHP
250CDL750 RC1	500	1035.2	13.5	944.1	23.1	838.5	32.8	719.7	40.9	-	-
	840	2076.5	27.6	1987.9	39.7	1885.5	52.8	1771.1	65.3	-	-
	1180	3106.6	43.3	3020.4	58.0	2921.2	74.3	2811.3	91.4	-	-
	1520	4125.4	60.8	4041.7	77.9	3945.8	97.6	3840.3	119.2	-	-
	1860	5133.1	79.8	5051.8	99.5	4959.1	122.4	4858.1	148.6	-	-
	2200	6129.5	100.6	6050.6	122.7	5961.1	149.0	5864.6	179.7	-	-
250CDL750 RC2	500	978.3	16.2	927.9	22.1	865.2	29.0	785.3	36.9	682.3	45.3
	840	2005.1	38.3	1958.2	44.9	1900.1	52.6	1826.8	61.7	1733.1	71.8
	1180	3037.3	63.0	2994.0	70.2	2940.6	78.7	2873.6	89.0	2789.4	100.7
	1520	4075.0	90.3	4035.3	98.0	3986.5	107.4	3925.9	118.8	3851.1	132.2
	1860	5118.1	120.0	5081.9	128.4	5037.8	138.7	4983.7	151.2	4918.3	166.3
	2200	6166.7	152.4	6134.1	161.4	6094.6	172.5	6046.9	186.1	5990.9	202.9
250CDL750 RC3	500	-	-	-	-	832.1	32.5	773.3	34.8	689.3	39.6
	840	-	-	-	-	1849.7	65.2	1796.4	65.9	1720.6	68.3
	1180	-	-	-	-	2868.2	102.0	2820.5	101.1	2752.7	101.0
	1520	-	-	-	-	3887.6	142.8	3845.4	140.2	3785.8	137.8
	1860	-	-	-	-	4907.9	187.5	4871.3	183.3	4819.8	178.5
	2200	-	-	-	-	5929.0	236.3	5898.0	230.5	5854.6	223.3

DIMENSIONS IN INCHES UNLESS OTHERWISE NOTED

MODEL	A	B	C	D	E	F	G	H	J	K	L	M
250CDL750	15.88	8.42	63.65	13.00	13.00	10.55	31.18	28.88	3.94 (100mm)	16 x 28 x 180 (mm)	38.47	13.75
	N	P	Q	R	S	T	U	V	W	X	Y	
	14" ANSI125FF	48.00	10.94	N/A	27.50	13.75	8.50	18.00	12" ANSI125FF	0.88	.88 x 1.75	

HIGH PRESSURE - PERFORMANCE DATA

MODEL	SPEED RPM	21 PSIG		24 PSIG		27 PSIG		30 PSIG		33 PSIG		36 PSIG	
		CFM	BHP	CFM	BHP	CFM	BHP	CFM	BHP	CFM	BHP	CFM	BHP
250CDL750 RC1	500	-	-	-	-	-	-	-	-	-	-	-	-
	840	-	-	-	-	-	-	-	-	-	-	-	-
	1180	-	-	-	-	-	-	-	-	-	-	-	-
	1520	-	-	-	-	-	-	-	-	-	-	-	-
	1860	-	-	-	-	-	-	-	-	-	-	-	-
	2200	-	-	-	-	-	-	-	-	-	-	-	-
250CDL750 RC2	500	537.9	109.7	-	-	-	-	-	-	-	-	-	-
	840	1583.1	178.9	1527.2	203.2	1472.5	228.1	-	-	-	-	-	-
	1180	2635.3	251.5	2582.4	283.5	2530.7	316.1	2480.2	349.4	-	-	-	-
	1520	3694.5	327.7	3644.5	367.3	3595.8	407.6	3548.3	448.5	-	-	-	-
	1860	4760.6	407.4	4713.6	454.6	4667.8	502.6	4623.3	551.2	-	-	-	-
	2200	5833.7	490.6	5789.7	545.5	5746.8	601.1	5705.3	657.4	-	-	-	-
250CDL750 RC3	500	552.8	105.1	-	-	-	-	-	-	-	-	-	-
	840	1545.7	174.3	1503.0	194.4	1461.3	215.5	-	-	-	-	-	-
	1180	2565.0	250.7	2524.1	275.3	2484.2	301.0	2445.2	327.8	2407.2	355.7	-	-
	1520	3610.8	334.3	3571.6	363.5	3533.5	393.7	3496.3	425.1	3460.0	457.5	3424.8	491.0
	1860	4682.9	425.1	4645.5	458.8	4609.1	493.7	4573.7	529.5	4539.3	566.5	4505.8	604.5
	2200	5781.4	523.1	5745.8	561.4	5711.2	600.8	5677.6	641.2	5644.9	682.7	5613.2	725.3

HIGH VACUUM - PERFORMANCE DATA

MODEL	SPEED RPM	18 IN HG		19 IN HG		20 IN HG		21 IN HG		22 IN HG	
		CFM	BHP	CFM	BHP	CFM	BHP	CFM	BHP	CFM	BHP
250CDL750 RC1	500	-	-	-	-	-	-	-	-	-	-
	840	-	-	-	-	-	-	-	-	-	-
	1180	-	-	-	-	-	-	-	-	-	-
	1520	-	-	-	-	-	-	-	-	-	-
	1860	-	-	-	-	-	-	-	-	-	-
	2200	-	-	-	-	-	-	-	-	-	-
250CDL750 RC2	500	641.7	47.8	597.9	49.7	-	-	-	-	-	-
	840	1696.7	75.0	1657.8	77.8	1617.1	79.8	-	-	-	-
	1180	2757.2	104.7	2723.2	108.4	2688.5	111.5	-	-	-	-
	1520	3823.1	137.0	3794.1	141.6	3765.3	145.7	-	-	-	-
	1860	4894.4	171.8	4870.4	177.3	4847.6	182.4	-	-	-	-
	2200	5971.3	209.1	5952.2	215.5	5935.3	221.7	-	-	-	-
250CDL750 RC3	500	652.7	42.2	610.0	45.7	559.7	50.5	-	-	-	-
	840	1687.6	69.9	1649.2	72.1	1604.0	75.4	1550.1	80.2	-	-
	1180	2723.4	101.5	2689.3	102.5	2649.2	104.2	2601.6	107.2	2544.0	112.3
	1520	3760.1	137.2	3730.3	136.9	3695.4	137.1	3654.0	138.3	3604.3	141.0
	1860	4797.7	176.9	4772.1	175.3	4742.4	174.0	4707.3	173.3	4665.5	173.7
	2200	5836.1	220.6	5814.9	217.7	5790.3	214.9	5761.5	212.4	5727.6	210.5

